

SPECIFICATIONS

ATB7700

POCKET SLIDING DOORS
Carbon Steel (Optional Stainless Steel and Bronze)

Bottom Carriage: Stainless Steel
Door Lock: Hoppe Keyed Flush Pull
Flushbolt: Concealed Flushbolt
Bottom Track: Custom Stainless Steel Pan System with Drainage

Glazing:
Type: Double (Single and Triple Available)
Glass: Cardinal 366 over clear Tempered
NFRC ratings vary based on glass type
Spacer: Black
Thickness: 1" Overall
Glazing Orientation: Exterior
Stop Type: Factory Wet Glazed (Metal Stop available)
Muntin: 1-1/4" for TDL

Weather Strip:
Brush and Silicon Gasket
4-Point Contact, Black

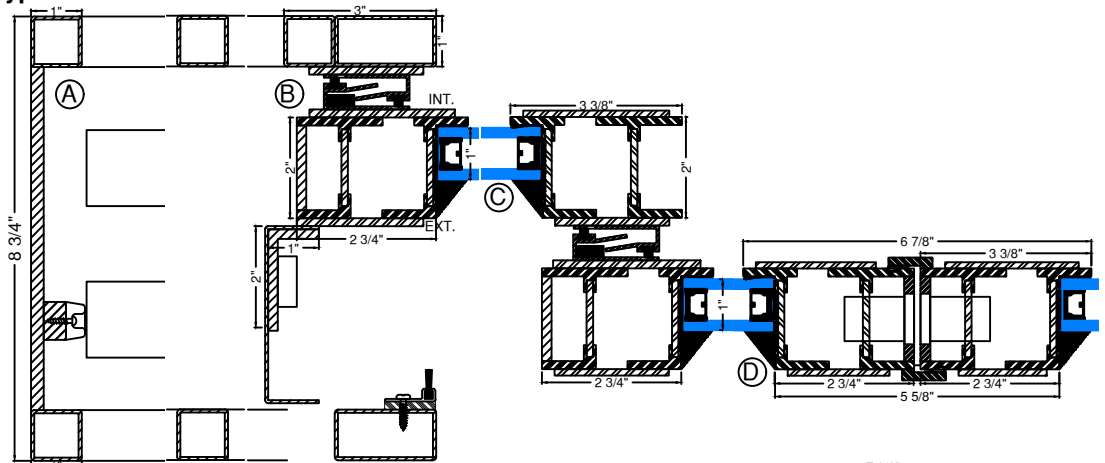
Sill: Custom Stainless Steel with Drainage System

Frame Depth: 2"

Finish:
Thermally Bonded Galvanized
Paint Finish Options Specify Color
2 coats of epoxy Base Primer
2 coats of Acrylic Lacquer Paint
3 coats of Clear Polyurethane

Coastal Finish Available

***Door exceeding 12 ft. in width or 12 ft. in height will ship in separate sections to be site milled.
*For Installation Flange Details-Refer to Installation Flange options pages.**



DOOR POCKET FRAME DEEP SIZE	
1 TRACK	5 7/16"
2 TRACK	8 3/4"
3 TRACK	11 3/4"
4 TRACK	14 13/16"

