

SPECIFICATIONS

ATB5100

IN-SWING DOUBLE DOOR

Carbon Steel (Optional Stainless Steel and Bronze)

Door Hinge: Adjustable Steel Post in Barrel w/Ball Bearings

Door Lock: Hoppe Multipoint System (Optional Rocky Mountain Mortise Hardware)

Flushbolt: Hoppe Shootbolt Top and Bottom

Glazing:

Type: Double (Single and Triple Available)

Glass: Cardinal 366 over clear Tempered

NFRC ratings vary based on glass type

Spacer: Black

Thickness: 1" Overall

Glazing Orientation: Exterior

Stop Type: Factory Wet Glazed (Metal Stop available)

Muntin: 1-1/4" for TDL

Weather Strip:

Silicon Gasket 4-Point Contact, Black

Sill: Custom Bronze Weep, Bronze Patina

Frame Depth: 2"

Finish:

Thermally Bonded Galvanized

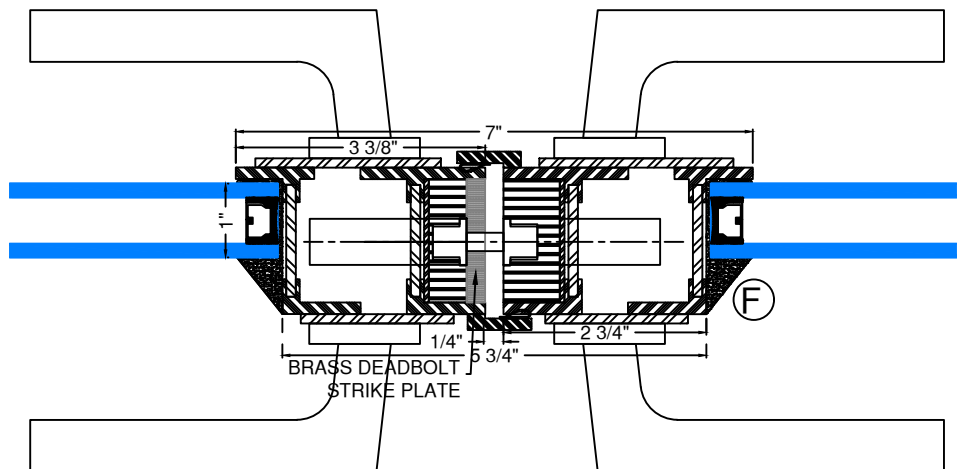
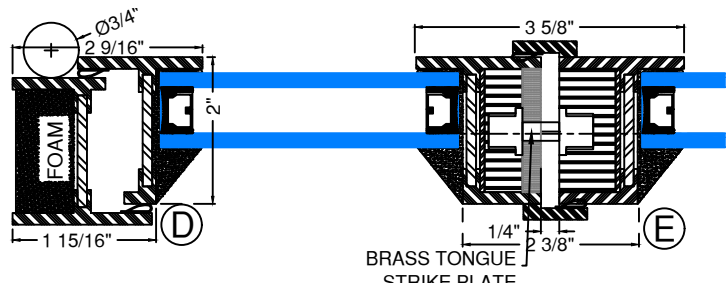
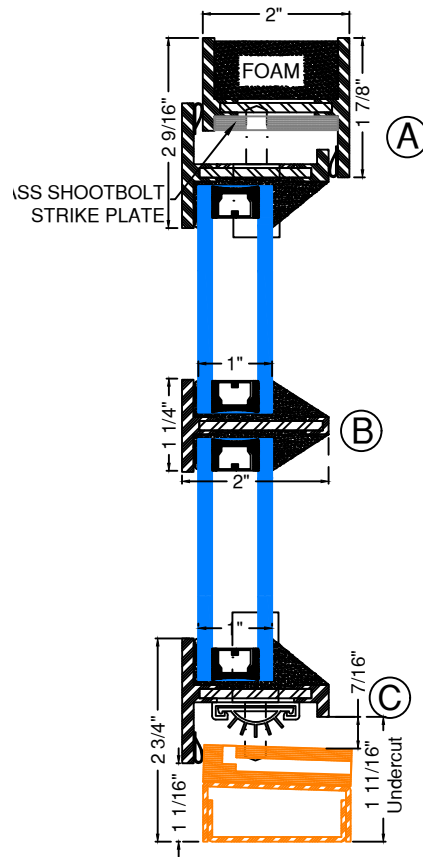
Paint Finish Options Specify Color

2 coats of epoxy Base Primer

2 coats of Acrylic Lacquer Paint

3 coats of Clear Polyurethane

Coastal Finish Available



*For Installation Flange Details-Refer to Installation Flange options pages.

*Door exceeding 12 ft. in width or 12 ft. in height will ship in separate sections to be site mullied. Refer to "Mull Section" pages.