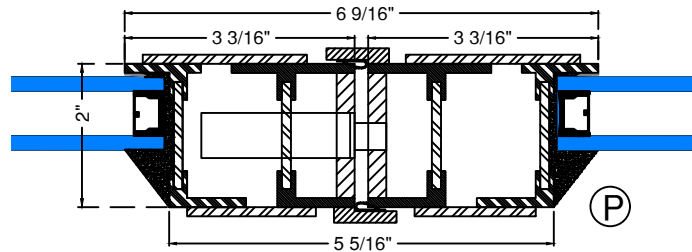


SPECIFICATIONS

ATB7500

- POCKET SLIDING DOORS**
- Carbon Steel (Optional Stainless Steel and Bronze)**
- Door Hinge: Adjustable Stainless Steel Bottom Carriage**
- Door Lock: Accurate Sliding Hardware System**
- Flushbolt: Concealed Flushbolt**
- Bottom Track: Custom Pan System with Drainage, Impact Rated**

- Glazing:**
- Type: Double (Single and Triple Available)**
 - Glass: Cardinal 366 over clear Tempered**
 - NFRC ratings vary based on glass type**
 - Spacer: Black**
 - Thickness: 1" Overall**
 - Glazing Orientation: Exterior**
 - Stop Type: Factory Wet Glazed (Metal Stop available)**
 - Muntin: 1-1/4" for TDL**

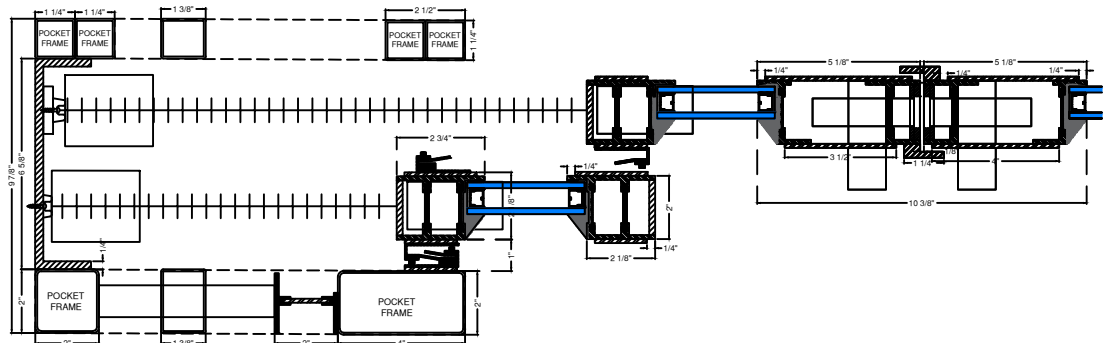


- Weather Strip:**
- Brush and Silicon Gasket**
 - 4-Point Contact, Black**

- Sill: Custom Stainless Steel with Drainage System**

- Frame Depth: 2"**

- Finish:**
- Thermally Bonded Galvanized**
 - Primer 2 coats-Macroproxy Marine**
 - Grade ASTM D4587,D5894**
 - Finish Color 2 Coats-Polyurethane Enamel**



For Installation Flange Details-Refer to Installation Flange options