

**SPECIFICATIONS**

**ATB7200**

**MULTI SLIDE DOORS**

- Carbon Steel (Optional Stainless Steel and Bronze)
- Door Hinge: Adjustable Stainless Steel Bottom Carriage
- Door Lock: Accurate Sliding Hardware System
- Flushbolt: Concealed Flushbolt
- Bottom Track: Custom Pan System with Drainage

**Glazing:**

- Type: Double (Single and Triple Available)
- Glass: Cardinal 366 over clear Tempered
- NFRC ratings vary based on glass type
- Spacer: Black
- Thickness: 1" Overall
- Glazing Orientation: Exterior
- Stop Type: Factory Wet Glazed (Metal Stop available)
- Muntin: 1-1/4" for TDL

**Weather Strip:**

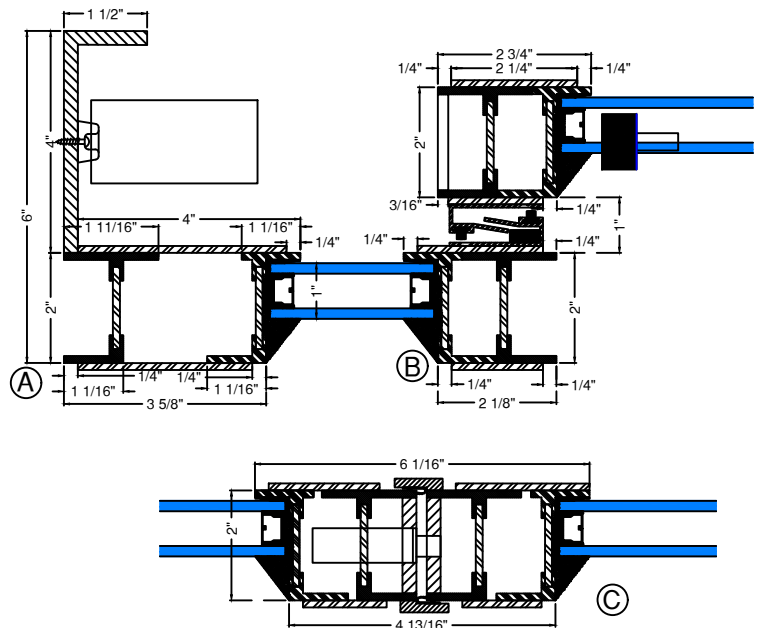
- Brush and Silicon Gasket 4-Point Contact, Black,

**Sill: Custom Stainless Steel with Drainage System**

**Frame Depth: 2" on Panels**

**Finish:**

- Thermally Bonded Galvanized
- Primer 2 coats-Macroproxy Marine Grade ASTM D4587,D5894
- Finish Color 2 Coats-Polyurethane Enamel



For Installation Flange Details-Refer to Installation Flange options