

**SPECIFICATIONS**

**ATB5200**

IN-SWING DOUBLE DOOR W/FIXED SIDELITES & TRANSOM  
Carbon Steel (Optional Stainless Steel and Bronze)

Door Hinge: Adjustable Steel Post in Barrel w/Ball Bearings  
Door Lock: Hoppe Multipoint System  
Flushbolt: Hoppe Shootbolt Top and Bottom

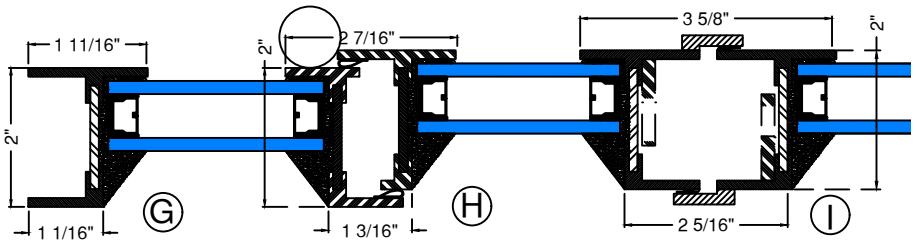
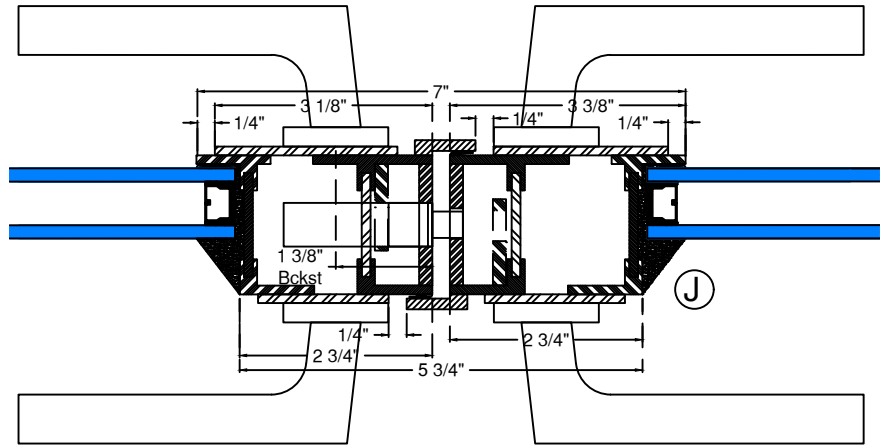
**Glazing:**  
Type: Double (Single and Triple Available)  
Glass: Cardinal 366 over clear Tempered  
NFRC ratings vary based on glass type  
Spacer: Black  
Thickness: 1" Overall  
Glazing Orientation: Exterior  
Stop Type: Factory Wet Glazed (Metal Stop available)  
Muntin: 1-1/4" for TDL

**Weather Strip:**  
Silicon Gasket 4-Point Contact, Black

**Sill:** Custom Bronze Weep, Bronze Patina

**Frame Depth:** 2"

**Finish:**  
Thermally Bonded Galvanized  
Primer 2 coats-Macroproxy Marine Grade ASTM  
D4587,D5894  
Finish Color 2 Coats-Polyurethane Enamel



For Installation Flange Details-Refer to Installation Flange options